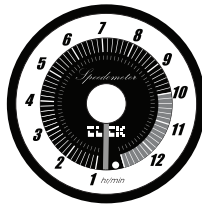


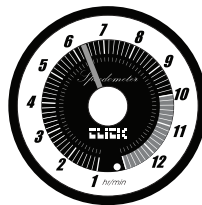
www.click-watch.com

IDLE MODE



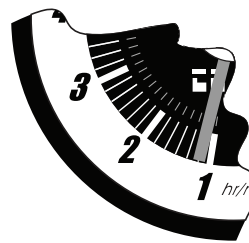
In IDLE mode, the pointer will stay behind the digit 1. Press button A, it will enter Time mode.

TIME MODE

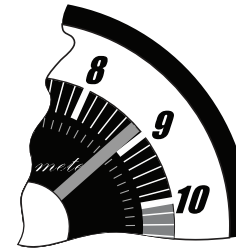


In TIME mode, the pointer will move automatically. If press button A, it will enter IDLE mode again.

HOW to see time?
Every index shows 10 mins time interval



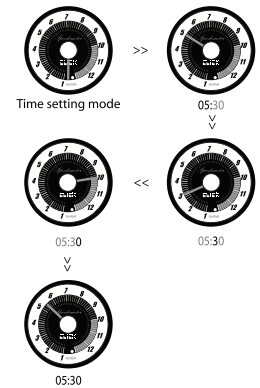
(Time from 1:06~1:15)



(Time from 8:46~8:55)

HOW TO SET TIME?

Press button B to enter TIME SETTING MODE mode. The LED will be blinking (slow frequency). It is in hour setting mode, press A to change the hour. (05:30) Press button B to confirm and enter next setting. The LED will be blinking (normal frequency). It is minute in tens setting mode. Press button A to change the digit. (05:30) Press B to confirm and enter next setting. The LED will be blinking (fast frequency). It is minute setting mode. Press button A to change the digit. (05:30) Press button B to confirm and exit the setting mode.



CALIBRATION

If after some times of using, due to battery low or some possible shock against the watch, the time pointer may not be pointing back to zero when going to IDLE mode. Then, we will need to calibrate the watch.

Step 1 : plug in the usb cable to your computer or usb power source. (and you will see the LED light up and down slowly means it is being recharged)

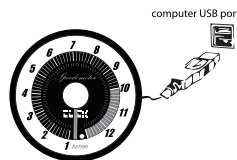
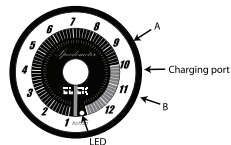
Step 2 : press Button A once or twice to ensure now going into IDLE mode

Step 3 : use a pin to press Button B one by one, you will aware the pointer will move anti-clockwise step by step.

Step 4 : when back to zero, you may go 1 or 2 steps more to let it firmly fix in zero position.

Step 5 : finish and you may keep the usb charging the watch until it is fully recharged and the LED will be light off accordingly.

Remarks : in case the pointer bounce back a little bit, you may repeat Step 3-4 again.



Unscrew the charging port screw

RECHARGING THE BATTERY

- This watch has a USB rechargeable battery.

- When the light become dim or do not light up, or the watch has been used for 2 months , or the pointer cannot work properly, you should recharge the battery.

- To recharge the battery, unscrew the USB cap using the screw driver provided and connect the USB cable to the USB charging jack.

- Connect the charging cable to power source. e.g. your computer.

- When charging, the LED charging indicator will blink.

- When the charging indicator stops blinking, the battery is fully charged.

- It is advised that you use the screw driver provided when opening the USB cap so as not to damage the head of the screw.

BATTERY

- Speedometer uses a rechargeable watch battery. (3.7V PL401119)
- The battery should last about 2 months between charges. Depending the frequency of press.
- The battery lifetime is expected to be 300 charges.
- Only use the cable provided with the watch for recharging, as it is designed specifically for this watch.

- Watch
- USB Cable
- Screw Driver
- Instruction Manual



This watch is covered by a 1 year warranty. This warranty does not cover water damage , accidental damage, neglect or unauthorized repair.

This watch has limited water resistance . Please do not use the watch in the shower, for swimming or for other water related activities.